



6	□□□□	T / T
7	□□	□□□□□□□□□□□□□□
8	□□	□□□□□□
9	□□□□	□□□□□□□□□□
10	□□□□	□□□□40□□
11	□□	□□□□□□□□□□□□□□□□□□□□□□□□□□□□□□□□

**Products applications**

AVAILABLE IN 5 RICH COLORS:



Brown



Tan



Burgundy



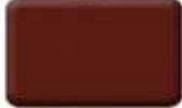
Gray



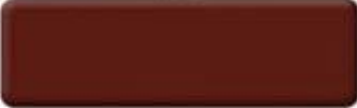
Black

AVAILABLE IN 4 SIZES:

3x2



6x2



6x3



5x4



**Products applications**





**Our company**

Finehope 2002 100 41 32 7000 1000





# Quality control

## Quality Management



## Material Research and Develop



### I. Quality Management



- ◆ Through the continuous push, maintenance and periodic review for the quality management system of ISO9001, ISO/TS 16949, to ensure the system works sufficiently, appropriately and effectively.
- ◆ Five core tools of ISO/TS 16949 : APQP, FMEA, MSA, SPC and PPAP. The effective use of these five core tools can make our quality control and overall management level improved greatly, finally to meet the requirements of customer.

### II. Material Research and Develop



- ◆ Under a professional PU material R&D team, the products that has been put into production include MDI, TDI, HDI and PPDI etc polyether and polyester system formula, which covering all PU systems formula.

# Certifications



**FAQ**

**1. Finehope**

- 1. Finehope
- 2. Finehope
- 3. Finehope
- 4. Finehope
- 5. Finehope
- 6. Finehope pu
- 7. Finehope

**2. Finehope**

- 1. Finehope APQP
- 2. Finehope
- 3. Finehope
- 4. Finehope
- 5. Finehope

## Finehope

- 1.
- 2.
- 3.
- 4.

## Finehope

1. Finehope R& D PU CAT FIAT TVH GGP 12