

[Chine Siège d'alimentation pour chaise de bébé de haute qualité Chaise de sol pour nouveau-né en polyuréthane écologique de qualité supérieure Réhausseur pour bébé Fabricants](#)







Finehope



20 Years
Source Factory

Support Online Custom

Polyurethane New Material Solutions

[Finehope personnaliser bébé confortable assis bébé formateur soutien sol chaises siège hanche chaise transporteur Bumbo siège](#)

COMPANY PROFILE



ABOUT US

19 years production experience on PU molded foam products

10000m²
Factory area

6000 tons
Annual output

32 sets
Large-scale equipment

130 million
Annual sales

Finehope has an annual output of 6,000 tons, has 32 large-scale equipment, and 12 independent research and development and manufacturing automatic assembly lines. Finehope's advantage is from the research and development of raw materials and formulas to the independent completion of mold design and manufacturing.

Cooperative customers include Fortune 500 companies such as Caterpillar and Honeywell. Finehope has obtained ISO9001, IATF16949 and FDA certificates.

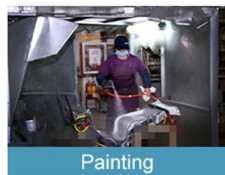
Perfect production system



R & D Department



Trimming Deflashing



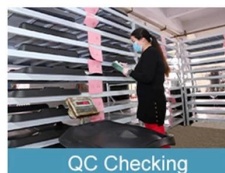
Painting



QC / Acceptance Standard



QC Checking



QC Checking

19 YEARS PRODUCTION EXPERIENCE ON PU MOLDED FOAM PRODUCTS

CUSTOMER VISIT



19 YEARS PRODUCTION EXPERIENCE ON PU MOLDED FOAM PRODUCTS

ATTEND THE EXHIBITION



19 YEARS PRODUCTION EXPERIENCE ON PU MOLDED FOAM PRODUCTS

PROFESSIONAL CERTIFICATION



19 YEARS PRODUCTION EXPERIENCE ON PU MOLDED FOAM PRODUCTS

SAMPLE SHOW



Global polyurethane PU customization

CONTACT US



CONSULTING SERVICE



PACKAGING DESIGN



DRAWINGS CONFIRM



PAYMENT



DELIVERY ON TIME



QUICK CUSTOMIZATION
RENDERINGS AND QUOTATIONS



VISIT THE STORE HOMEPAGE TO LEARN MORE

Finehope personnaliser bébé confortable
assis bébé formateur soutien sol chaises
siège hanche chaise transporteur Bumbo
siège