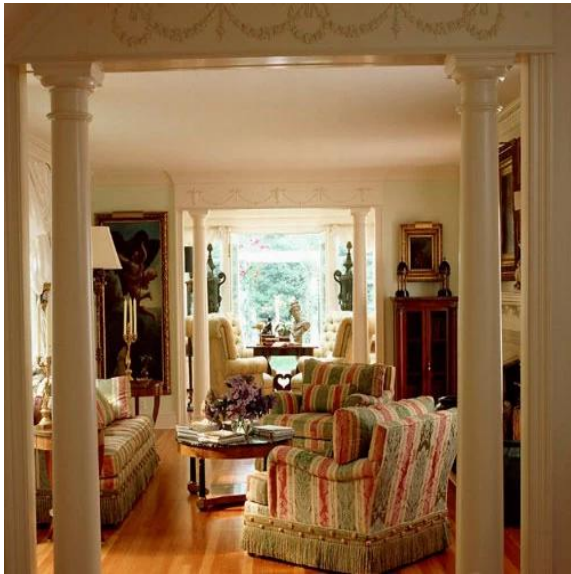




Χαρακτηριστικά της ρωμαϊκής κυκλίδωμα:

1. Φυσικό & amp? Ελκυστική εμφάνιση
2. Δεν ακτινοβολίας, μη, μη τοξικό και φιλικό προς το περιβάλλον χαρακτηριστικά
3. Αντοχή στο ξεθώριασμα και την ανταγωνιστική τιμή
4. Ελαφριά και, στη συνέχεια, εύκολο στη μεταφορά
5. Φως πλοίων μεταφοράς εμπορευματοκιβωτίων και εύκολο στη μεταφορά

Εικόνα που δείχνει λατινικούς κυκλίδωμα



Company Information

Finehope polyurethane products co., LTD is located in the international garden city of Xiamen, which is a set of comprehensive engineering research and development of polyurethane materials, the production of PU foam products, sales of polyurethane material as one of the foreign-owned companies, Products are exported to the United States and European Union market, the monthly production capacity is 200 tons



Enterprise Culture



Outdoor



The Mid Autumn Festival



Evening party



Traveling



Xiamen University training course



Excellent employee Award Presentation Ceremony



Employee birthday

Famous Customers

1. CAT(TOP500 in the world)[↵]
2. GGP(European's largest garden equipment company)[↵]
3. Star Trac(Worldwide Commercial Fitness Equipment TOP4)_↵
4. Wonderland(the largest ODM manufacturer of Nursery goods in the world)[↵]

LOGO

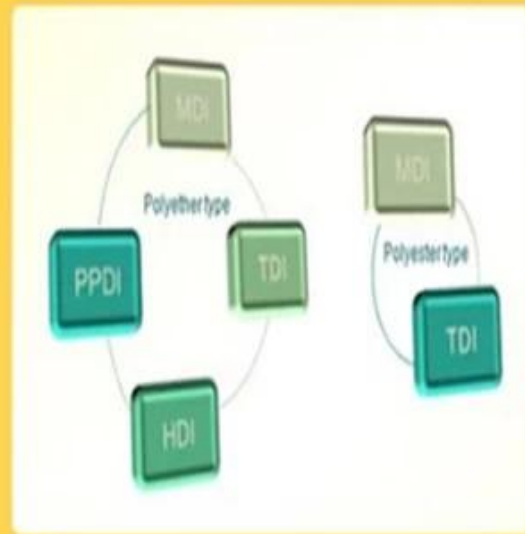
The cooperation of the brand customer LOGO



Our Advantages

Quality Management

Material Research and Development



Product Process



Lean production lines on 4th Floor



Cap & base products painting production lines on the 2nd floor



Polishing production lines on the 2nd Floor



Painting production lines on the 1st Floor



Cap & base sets production lines on the 1st Floor

Experimental Equipment



Certifications



FAQ

1. Why you choose Finehope?

Finehope is the most professional pu manufacturer in China, which has a professional R & D team, advanced PU production equipment, professional testing equipment and perfect quality management system. We have 12-year cooperation experience with CAT, FIAT, TVH, GGP and other famous enterprises. We provide them with one-stop service from R & D to production to satisfy their customization needs.

2. What are the advantages of choosing Finehope?

1. Product quality assurance, delivery guarantee, good after-sales service
2. Cost-effective, fast development efficiency, professional operation with integrity
3. Finehope will conduct all testing analysis and then work out testing standards to reduce quality standard dispute between customers and manufacturers.
4. Lean production management mode.
5. Help customers develop and design new products.
6. Has rich experience in the design and processing of pu products.
7. Finehope is a high-tech enterprise in China with domestic and international invention patents technology and intellectual property.

3. What are the differences between Finehope and domestic peers?

1. Quality assurance: advanced product quality planning(APQP).
2. Finehope has rich experience in serving international large enterprises.
3. Has professional scientific research team of polyurethane material.
4. Has independent design, manufacturing and innovation ability of production equipment and molds.
5. Has engineer team who is responsible for the quality assurance system and quality control.

4. What are the differences between Finehope and European and U.S peers?

1. Has sound and mature supporting supply chain
2. Lower mold costs
3. High efficiency of development and design ability and short process time.
4. Cost effective and good service attitude.

5. What are the applications of pu products?

car, engineering machinery, sports fitness equipment, medical machinery and daily household items and so on.

Contact Us



0086-592-6661766



dana-@finehope.com