

**Finehope**



REACH  
SVHC



**RoHS** SGS



REACH  
SVHC



SGS



REACH  
SVHC **RoHS** SGS



REACH SVHC **RoHS** SGS



REACH SVHC **RoHS** SGS



REACH SVHC **RoHS** SGS



# Finehope地毯 吸水性能测试

Micro Test

## 测试目的

前言

居家和办公室无处不在的污染源。潮湿的环境下，如果地毯产品使用吸水性材料，在清洁工作中，经常沾水，甚至用高压水枪冲刷地毯表面和接缝，这可能导致地毯受潮，使得地毯内部结构材料膨胀变形甚至发霉，进而影响使用寿命。

由于居家和办公室的主要污染源是潮湿的环境造成的，因此我们在设计地毯和测试者选择地毯产品时应该选择吸水性能优异的产品。  
Finehope公司生产的地毯产品均选择最高品质的天然或合成纤维材料，能够保护广大客户所期望的洁净度和使用寿命的产品。



Micro Test

## 测试目的

- **测试标准** (CEN EN 12566:2010)
  - 测试方法: 通过人工模拟昆虫排泄物在样品表面进行模拟测试。
  - 测试: (昆虫排泄物、室内空气质量标准) • 2012 11 14 •
- **测试原理:**
  - 通过人工模拟，可以模拟昆虫排泄物在样品表面，为了检测地毯是否吸水，通过测试地毯在空气中释放的二氧化碳含量来检测。对于地毯的测试原理，检测原理如下: 昆虫排泄物。
- **测试原理及测试原理:**
  - 通过人工模拟昆虫排泄物，通过人工模拟，检测、测试、检测原理、测试、测试原理、测试原理及测试原理。



Micro Test

## 测试目的

- **测试原理及测试原理**
  - 通过人工模拟昆虫排泄物在样品表面进行模拟测试，通过人工模拟昆虫排泄物在样品表面进行模拟测试，通过人工模拟昆虫排泄物在样品表面进行模拟测试。
- **测试原理及测试原理:**
  - 通过人工模拟昆虫排泄物，通过人工模拟，检测、测试、检测原理、测试、测试原理、测试原理及测试原理。



Micro Test

## 测试过程

- **测试材料准备:**
  1. 将100ml蒸馏水加入杯中;
  2. 加入少量盐(约1g);
  3. Finehope将蒸馏水加入上述蒸馏水中搅拌均匀(搅拌均匀)
- **测试方法:**
  1. 将100ml蒸馏水加入杯中;
  2. 将少量盐加入杯中; (将少量盐加入杯中搅拌均匀)
  3. 将少量盐加入杯中; 将少量盐加入杯中搅拌均匀; (将少量盐加入杯中搅拌均匀)



Micro Test

## 测试过程

- **测试过程第1步:**
  - 将一定量液体滴在样品表面



Micro Test

## 测试过程

- **测试过程第2步:**
  - 将少量液体滴在样品表面; (将少量液体滴在样品表面)



Micro Test

## 测试过程

- **测试过程第3步:**
  - 将少量液体滴在样品表面; (将少量液体滴在样品表面)



Micro Test

## 测试过程

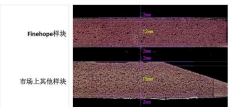
- **测试过程第4步:**
  - 将少量液体滴在样品表面; (将少量液体滴在样品表面)



Micro Test

## 测试分析

Finehope地毯吸水性能优异的原因是地毯材料，通过人工模拟昆虫排泄物，通过人工模拟昆虫排泄物，通过人工模拟昆虫排泄物。



Micro Test

## First, the product description

### 1. Features

**PU mats, PUR anti-fatigue mats, PU foam anti-fatigue mats made in China, PU mats China suppliers**

#### Since a skin foam characteristics:

1. Low density, light weight, no smell, the surface texture of leather, one piece no difference.
2. The high impact resistance, wear resistance, permanently elastic
3. waterproof, crack, anti-UV, anti-distortion, anti-aging;
4. Surface easy to color, easy to color the whole, are environmentally friendly products;
5. hardness with customer requirements modulation;
6. Can be made into any shape, it can be placed in reinforcing filler, light weight, easy to install;

### 2, the product uses

#### Since a soft leather products are widely used:

1. Automotive: bumper, steering wheel, armrest mats, car head cushions, shift lever, fenders, overcast flow plate, the instrument panel, air filter, bicycle seat, tractors, off-road vehicles cushion, reaction injection molding products Wait;
2. sports equipment: fitness equipment cushion, backrest, kneeling pads, grips, pedals, bicycle saddles, sports kneepad and so on;
3. Medical devices: one piece dental chairs, surgical table tops edge, hanging racks, wheelchair armrests;
4. Household items: armrest mats, chair legs, decorative items;
5. Other Uses: toys, packaging;

## Second, with regard us

### 1. Introduction

- We are a leading manufacture of molded polyurethane products manufacturer, was established in 2002. Our products are mainly exported to European and US markets.
- We have a professional production of polyurethane products top-quality requirements for the goal. The main reason customers choose our fancy our broad R & D capabilities and with international brand companies and ensure long-term experience with shipping quality.
- Division I after the Swiss SGS ISO9001-2008 certification, in accordance with TS16949 system for quality control. Lean is we have been pursuing the goal to reduce waste, create additional value, sustained commitment to help our customers control costs and create additional value.



### 2, our brand customers

Located in various regions and industries the Americas, Europe, Asia ..... welcome your visit, thank you!



### 3, our advantage

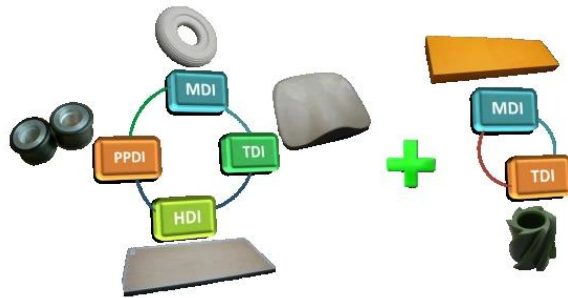
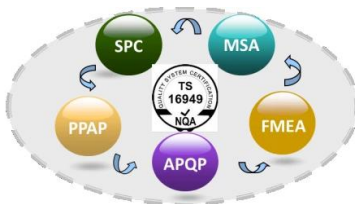
A. Quality management through the company ISO9001, ISO / TS 16949 quality management system continued to promote, maintain and regularly reviewed to ensure their full, appropriate and effective operation;

ISO / TS 16949 five core tools: effective use of APQP, FMEA, MSA, SPC, PPAP, so that our quality control and overall management level have been greatly improved, and ultimately to meet customer requirements.

B. materials research and development of polyurethane material has a professional R & D team has been put into products, including MDI, TDI, HDI, and PPDI and other polyether, polyester systems formula, covering all polyurethane systems formulations.

C. improved equipment for production equipment has the ability to self-improvement and self-designed research Jidoka mold fixture, lean from Dong line.

D. Toyota's lean production using TPS lean management model to improve production efficiency, reduce waste and reduce costs.



### 4, our production

- Has PU industry's most advanced production equipment, including KraussMaffei machines and other production

materials of different PU products of high / low pressure perfusion machines;

- automated assembly line operations, including perfusion lines, painting lines, polishing lines, since shaken mold lines.
- have independent mold design, production, the ability to innovate, and a wealth of experience in the design and processing of metal, plastic and other parts of the PU;

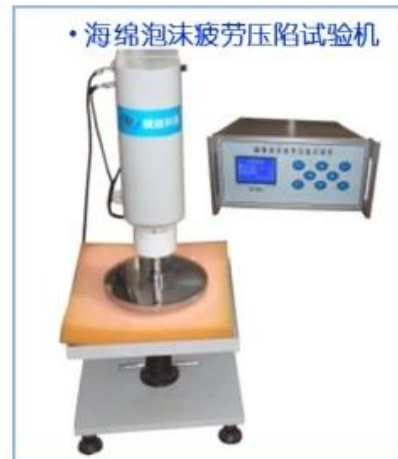
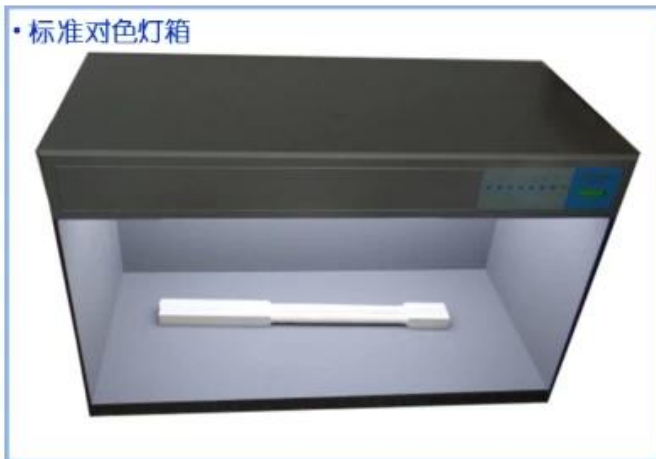


### 5, our testing equipment

- FINEHOPE PU material has a range of testing equipment, and dedicated quality assurance system and quality control engineers.
- FINEHOPE will carry out the testing product analysis, mechanical analysis products and materials, and ultimately develop a test product. Thereby reducing the quality standards disputes between customers and manufacturers.







6, we certificates

- FINEHOPE as Huaqiao University, Xiamen University and the polyurethane product research and postgraduate training base station.
- FINEHOPE domestic high-tech enterprises, with a number of domestic and foreign patents polyurethane intellectual invention.
- FINEHOPE passed ISO9001 certification, Alibaba, Alibaba is also a boutique company Prudential enterprises.



Third, FAQ

## 1) Why did you choose FINEHOPE

FINEHOPE is China's most professional manufacturer of PU, has a professional R & D team, advanced PU production equipment, professional testing equipment and perfect quality management system. Division I and CAT, FIAT, TVH, GGP and other famous enterprises have 12 years of experience of cooperation. Division I provide them with one-stop service from the production and customization to meet their needs.

## 2) Select FINEHOPE benefits

Reduce your time, reduce personal problems, reduce costs (explicit and implicit costs).

## 3) the product delivery cycle

Upon receipt of the deposit and the completion of 30 days to complete mold production, preparation and equipment without queuing period 10 days (depending on order quantity).

## 4) Product of transport

Qiyun, shipping, air transport (FedEx / UPS), depending on customer requirements.

## 5) How to track goods transportation

If the ocean bill of lading number will be provided to the customer, if it is air transport will provide fast waybill number.

## 6) How good product quality control

Quality first, to provide customers with high quality products is our mission. A professional team from beginning to end, good product quality control:

- All the raw materials, parts prior to production must undergo a rigorous inspection;
- All workers must undergo pre-production formal training;
- All products must pass strict control and inspection in the production process;
- All products must be checked before shipping again.

## Fourth, contact us



*Tel: +86-592-6661766*

*Email: feiyan@finehope.com*

**For more information, please contact us. I am Feiyan Zeng, welcome your visit, thank you!**

Phone: + 86-592-6661766

Fax: + 86-592-6282029

**Miss Zeng** Email: [feiyang@finehope.com](mailto:feiyang@finehope.com)

English Web site: [www.finehope.com](http://www.finehope.com)

Chinese Web site: <http://finehope.1688.com/>