

Finehope



REACH
SVHC



RoHS SGS

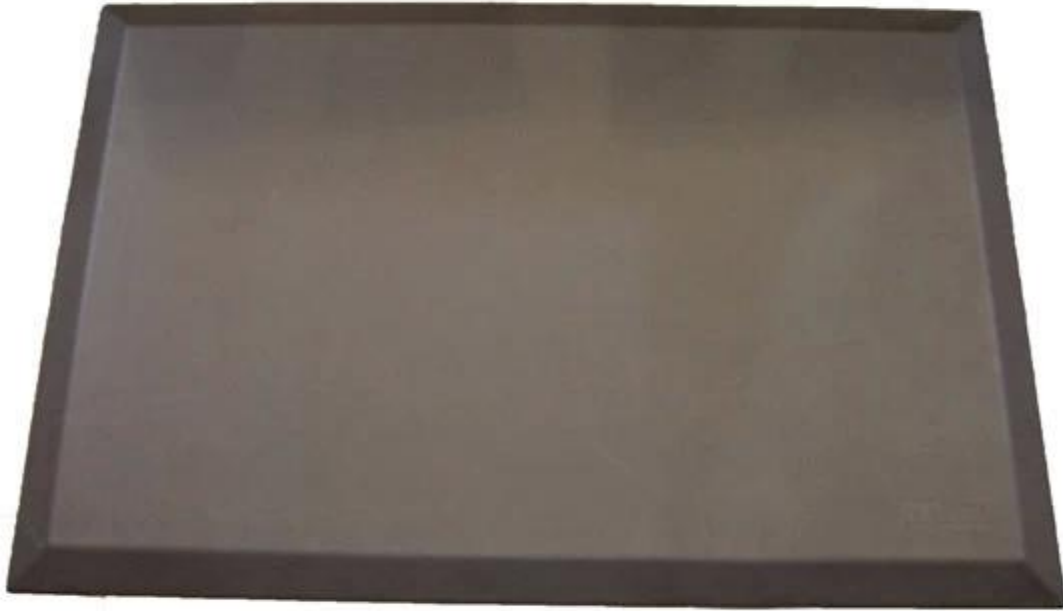
REACH
SVHC



RoHS SGS



REACH
SVHC **RoHS** SGS



REACH
SVHC **RoHS** SGS



REACH
SVHC **RoHS** SGS



Finehope地毯 吸水性能测试

Micro Test

测试目的

前言

居家和办公室无处不在的污染源。潮湿的环境下，如果地毯产品使用吸水性材料，在清洁工作中，经常沾湿水，甚至用高压水枪冲刷地毯表面和接缝，这有可能导致霉菌，使得地毯内部滋生霉菌和细菌，造成环境污染，因此会随地发生霉变。

由于霉菌和细菌的生长是随潮湿的环境而发生的，因此我们应设计地毯和调查者选择地毯产品时选择吸水性材料至关重要。
Finehope公司生产的地毯产品均选择最优质高含量的聚丙烯纤维材料，能够阻挡广大客户所面临的日常污染和意外事件的产品。



Micro Test

测试目的

- 按照ISO 16000-6:2011和ISO 16000-7:2011标准进行室内空气品质测试。
- 室内空气质量，室内空气质量标准符合 ISO 16000-6:2011 和 ISO 16000-7:2011。
- 室内空气质量，室内空气品质标准符合 ISO 16000-6:2011 和 ISO 16000-7:2011。
- 室内空气质量，室内空气品质标准符合 ISO 16000-6:2011 和 ISO 16000-7:2011。
- 室内空气质量，室内空气品质标准符合 ISO 16000-6:2011 和 ISO 16000-7:2011。



Micro Test

测试目的

- 室内空气质量测试，室内空气品质标准符合 ISO 16000-6:2011 和 ISO 16000-7:2011。
- 室内空气质量，室内空气品质标准符合 ISO 16000-6:2011 和 ISO 16000-7:2011。
- 室内空气质量，室内空气品质标准符合 ISO 16000-6:2011 和 ISO 16000-7:2011。
- 室内空气质量，室内空气品质标准符合 ISO 16000-6:2011 和 ISO 16000-7:2011。
- 室内空气质量，室内空气品质标准符合 ISO 16000-6:2011 和 ISO 16000-7:2011。



Micro Test

测试过程

- 测试材料准备
 1. 将地毯材料放入水中浸泡。
 2. 取出地毯材料。
 3. Finehope材料浸泡后迅速取出并放入测试材料中。
- 测试方法
 1. 将地毯材料放入水中浸泡。
 2. 取出地毯材料并放入测试材料中。
 3. 将地毯材料放入测试材料中。
 4. 将地毯材料放入测试材料中。
 5. 将地毯材料放入测试材料中。



Micro Test

测试过程

- 测试过程第1步

将一定量待测地毯材料放入水中浸泡。



Micro Test

测试过程

- 测试过程第2步

将一定量待测地毯材料放入水中浸泡。



Micro Test

测试过程

- 测试过程第3步

将一定量待测地毯材料放入水中浸泡。



Micro Test

测试过程

- 测试过程第4步

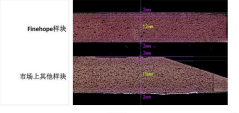
将一定量待测地毯材料放入水中浸泡。



Micro Test

测试分析

Finehope地毯吸水性能测试是选择最优质材料，是选择最优质材料，是选择最优质材料。



Micro Test

First, the product description

1. Features

PU slip pad China Suppliers, PU foam anti-fatigue mats Chinese factory, mold custom PU mats made in China, PUR mats

Since a skin foam characteristics:

1. Low density, light weight, no smell, the surface texture of leather, one piece no difference.
2. The high impact resistance, wear resistance, permanently elastic
3. waterproof, crack, anti-UV, anti-distortion, anti-aging;
4. Surface easy to color, easy to color the whole, are environmentally friendly products;
5. hardness with customer requirements modulation;
6. Can be made into any shape, it can be placed in reinforcing filler, light weight, easy to install;

2, the product uses

Since a soft leather products are widely used:

1. Automotive: bumper, steering wheel, armrest mats, car head cushions, shift lever, fenders, overcast flow plate, the instrument panel, air filter, bicycle seat, tractors, off-road vehicles cushion, reaction injection molding products Wait;
2. sports equipment: fitness equipment cushion, backrest, kneeling pads, grips, pedals, bicycle saddles, sports kneepad and so on;
3. Medical devices: one piece dental chairs, surgical table tops edge, hanging racks, wheelchair armrests;
4. Household items: armrest mats, chair legs, decorative items;
5. Other Uses: toys, packaging;

Second, with regard us

1. Introduction

- We are a leading manufacture of molded polyurethane products manufacturer, was established in 2002. Our products are mainly exported to European and US markets.
- We have a professional production of polyurethane products top-quality requirements for the goal. The main reason customers choose our fancy our broad R & D capabilities and with international brand companies and ensure long-term experience with shipping quality.
- Division I after the Swiss SGS ISO9001-2008 certification, in accordance with TS16949 system for quality control. Lean is we have been pursuing the goal to reduce waste, create additional value, sustained commitment to help our customers control costs and create additional value.



2, our brand customers

Located in various regions and industries the Americas, Europe, Asia welcome your visit, thank you!



3, our advantage

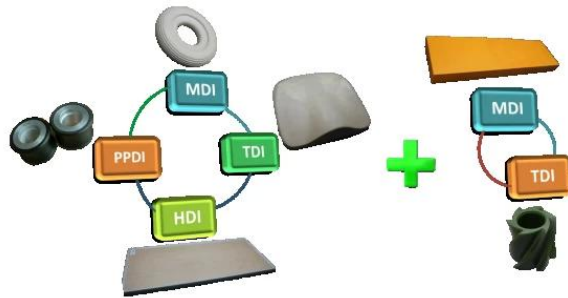
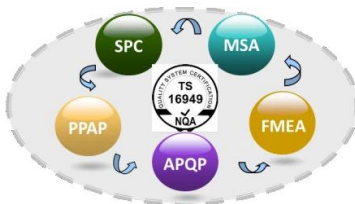
A. Quality management through the company ISO9001, ISO / TS 16949 quality management system continued to promote, maintain and regularly reviewed to ensure their full, appropriate and effective operation;

ISO / TS 16949 five core tools: effective use of APQP, FMEA, MSA, SPC, PPAP, so that our quality control and overall management level have been greatly improved, and ultimately to meet customer requirements.

B. materials research and development of polyurethane material has a professional R & D team has been put into products, including MDI, TDI, HDI, and PPDI and other polyether, polyester systems formula, covering all polyurethane systems formulations.

C. improved equipment for production equipment has the ability to self-improvement and self-designed research Jidoka mold fixture, lean from Dong line.

D. Toyota's lean production using TPS lean management model to improve production efficiency, reduce waste and reduce costs.



4, our production

- Has PU industry's most advanced production equipment, including KraussMaffei machines and other production

materials of different PU products of high / low pressure perfusion machines;

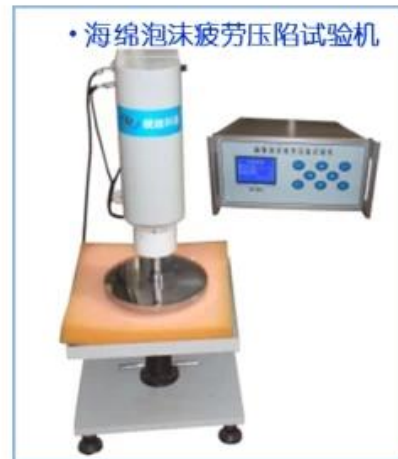
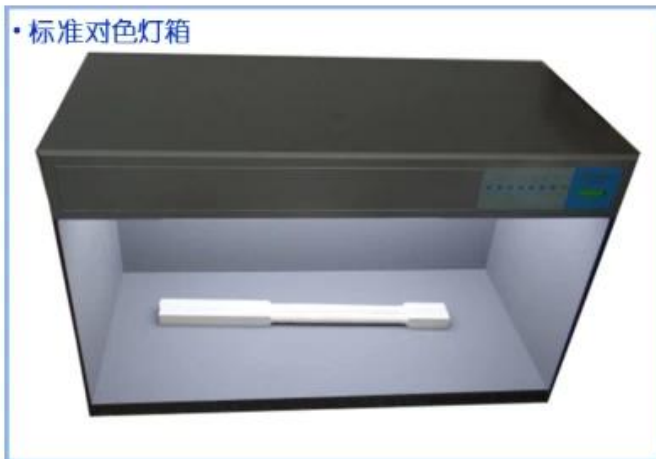
- automated assembly line operations, including perfusion lines, painting lines, polishing lines, since shaken mold lines.
- have independent mold design, production, the ability to innovate, and a wealth of experience in the design and processing of metal, plastic and other parts of the PU;



5, our testing equipment

- FINEHOPE PU material has a range of testing equipment, and dedicated quality assurance system and quality control engineers.
- FINEHOPE will carry out the testing product analysis, mechanical analysis products and materials, and ultimately develop a test product. Thereby reducing the quality standards disputes between customers and manufacturers.





6, we certificates

- FINEHOPE as Huaqiao University, Xiamen University and the polyurethane product research and postgraduate training base station.
- FINEHOPE domestic high-tech enterprises, with a number of domestic and foreign patents polyurethane intellectual invention.
- FINEHOPE passed ISO9001 certification, Alibaba, Alibaba is also a boutique company Prudential enterprises.



Third, FAQ

1) Why did you choose FINEHOPE

FINEHOPE is China's most professional manufacturer of PU, has a professional R & D team, advanced PU production equipment, professional testing equipment and perfect quality management system. Division I and CAT, FIAT, TVH, GGP and other famous enterprises have 12 years of experience of cooperation. Division I provide them with one-stop service from the production and customization to meet their needs.

2) Select FINEHOPE benefits

Reduce your time, reduce personal problems, reduce costs (explicit and implicit costs).

3) the product delivery cycle

Upon receipt of the deposit and the completion of 30 days to complete mold production, preparation and equipment without queuing period 10 days (depending on order quantity).

4) Product of transport

Qiyun, shipping, air transport (FedEx / UPS), depending on customer requirements.

5) How to track goods transportation

If the ocean bill of lading number will be provided to the customer, if it is air transport will provide fast waybill number.

6) How good product quality control

Quality first, to provide customers with high quality products is our mission. A professional team from beginning to end, good product quality control:

- All the raw materials, parts prior to production must undergo a rigorous inspection;
- All workers must undergo pre-production formal training;
- All products must pass strict control and inspection in the production process;
- All products must be checked before shipping again.

Fourth, contact us



Tel: +86-592-6661766

Email: feiyan@finehope.com

For more information, please contact us. I am Feiyan Zeng, welcome your visit, thank you!

Phone: + 86-592-6661766

Fax: + 86-592-6282029

Miss Zeng Email: feiyang@finehope.com

English Web site: www.finehope.com

Chinese Web site: <http://finehope.1688.com/>