

Finehope



REACH
SVHC



RoHS SGS

Finehope



REACH
SVHC

✓
RoHS

SGS

Finehope



REACH
SVHC

✓
RoHS

SGS

Finehope



REACH
SVHC

✓
RoHS

SGS

Finehope



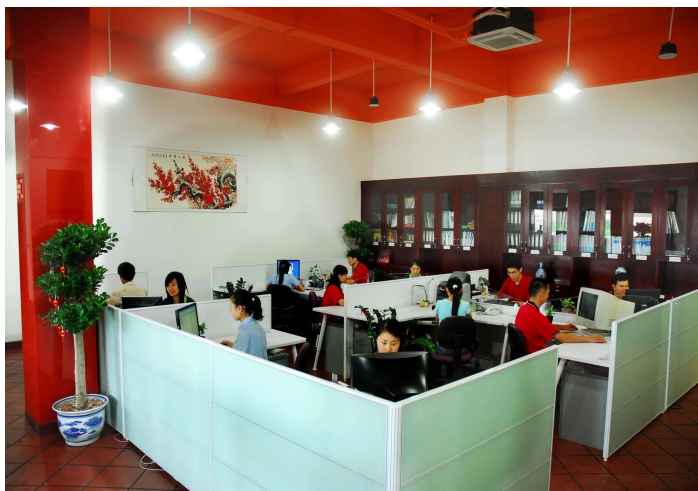
REACH
SVHC

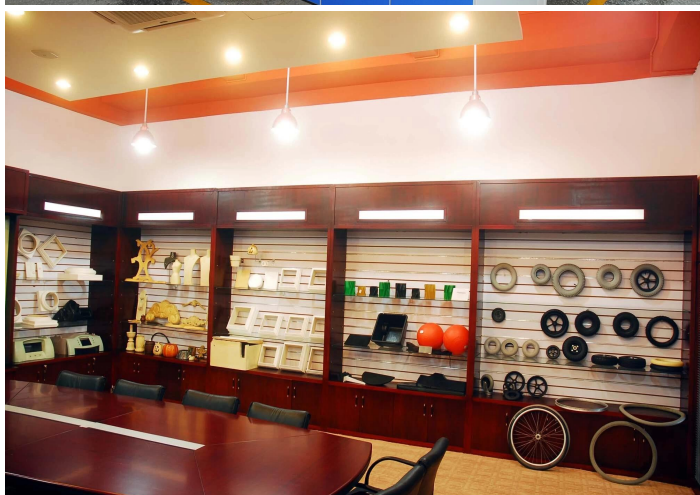
✓
RoHS

SGS

Our company

Finehope was founded in 2002 and the number of workers is more than 100, and the number of management group is 41 with the average age of 32. The company has a modern factory with an area of 7000 square meters, and it also has an office building with an area of 1000 square meters which combines modern and classical styles.



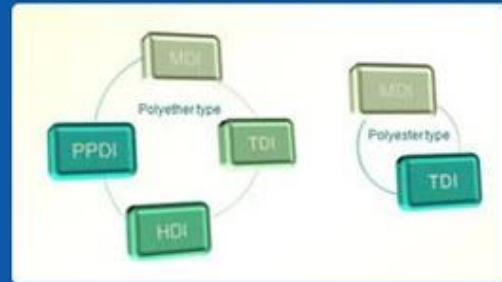


Quality control

Quality Management



Material Research and Develop

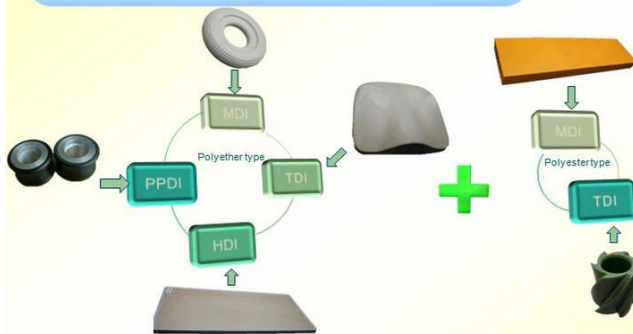


I. Quality Management



- ◆Through the continuous push, maintenance and periodic review for the quality management system of ISO9001, ISO/TS 16949, to ensure the system works sufficiently, appropriately and effectively.
- ◆Five core tools of ISO/TS 16949 : APQP, FMEA, MSA, SPC and PPAP. The effective use of these five core tools can make our quality control and overall management level improved greatly, finally to meet the requirements of customer.

II. Material Research and Develop



- ◆Under a professional PU material R&D team, the products that has been put into production include MDI, TDI, HDI and PPDI etc polyether and polyester system formula, which covering all PU systems formula.

Certifications



FAQ

1. What are the advantages of choosing Finehope?

1. Product quality assurance, delivery guarantee, good after-sales service
2. Cost-effective, fast development efficiency, professional operation with integrity
3. Finehope will conduct all testing analysis and then work out testing standards to reduce quality standard dispute between customers and manufacturers.
4. Lean production management mode.
5. Help customers develop and design new products.
6. Has rich experience in the design and processing of pu products.
7. Finehope is a high-tech enterprise in China with domestic and international invention patents technology and intellectual property.

2. What are the differences between Finehope and domestic peers?

1. Quality assurance: advanced product quality planning(APQP).
2. Finehope has rich experience in serving international large enterprises.
3. Has professional scientific research team of polyurethane material.
4. Has independent design, manufacturing and innovation ability of production equipment and molds.

5. 5. Has engineer team who is responsible for the quality assurance system and quality control.

3. What are the differences between Finehope and European and U.S peers?

1. 1. Has sound and mature supporting supply chain
2. 2. Lower mold costs
3. 3. High efficiency of development and design ability and short process time.
4. 4. Cost effective and good service attitude.

4. Why you choose Finehope?

1. Finehope is the most professional pu manufacturer in China, which has a professional R & D team, advanced PU production equipment, professional testing equipment and perfect quality management system. We have 12-year cooperation experience with CAT, FIAT, TVH, GGP and other famous enterprises. We provide them with one-stop service from R & D to production to satisfy their customization needs.

Contact Us

Tel: + 86-0592-15880277853

Fax: + 86-0592-6282029

WhatsApp: + 86-0592-15880277853

Belinda Lin E-mail: Sales19@finehope.com

www.finehope.com

www.polyurethanesupplierschina.com

www.finehope.en.alibaba.com

www.finehope.cn.alibaba.com